

LC3A Ab

Cat.#: BF0707
Size: 50ul,100ul,200ul

Concn.: 1mg/ml
Source: Mouse

Mol.Wt.: 14kDa,16kDa
Clonality: Monoclonal

Application: WB(1:500-1:2000), IHC(1:200-1:1000)

Reactivity: Human,Mouse,Rat

Purification: Affinity-chromatography.

Specificity: LC3A Ab detects endogenous levels of total LC3A.

Immunogen: Purified recombinant fragment of human LC3A expressed in E. Coli.

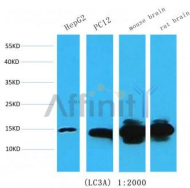
Uniprot: Q9H492

Subcellular Location: Cytoskeleton;

Tissue Specificity: Most abundant in heart, brain, liver, skeletal muscle and testis but absent in thymus and peripheral blood leukocytes.

Similarity: Belongs to the ATG8 family.

Storage Condition and Buffer: Mouse IgG1 in phosphate buffered saline (without Mg²⁺ and Ca²⁺), pH 7.4, 150mM NaCl, 0.02% sodium azide and 50% glycerol.Store at -20 °C.Stable for 12 months from date of receipt.



Western blot analysis of extracts from various samples, using LC3A mouse monoclonal Ab.

IMPORTANT: For western blot, incubate membrane with diluted primary Ab in 5% w/v milk, 1X TBS, 0.1% Tween@20 at 4°C with gentle shaking, overnight.

For Research Use Only. Not for use in diagnostic and therapeutic procedures. Not for resale without express authorization.